

ENGINEERING TIMES

Company Happenings:

- We are pleased to announce that Maxwell Garrett Dumack as a welcome addition to the Dumack Engineering family. Mother and son are both doing fine.
- Heath Dumack, P.E. & P.L.S. & Thomas Roache, P.E. attended the 2008 Pennsylvania Society of Land Surveyors state wide conference in Hershey, Pennsylvania, focusing on training on RTK GPS & the latest stormwater management design concepts.
- Dumack Engineering has volunteered in donating professional services to Habitat for Humanity for the creation of 6 new building lots in Bristol township, PA. Construction is expected to commence in the summer of 2008.

DUMACK ENGINEERING, P.C.

P.O. Box 487
677 Durham Road
Penns Park, PA 18943

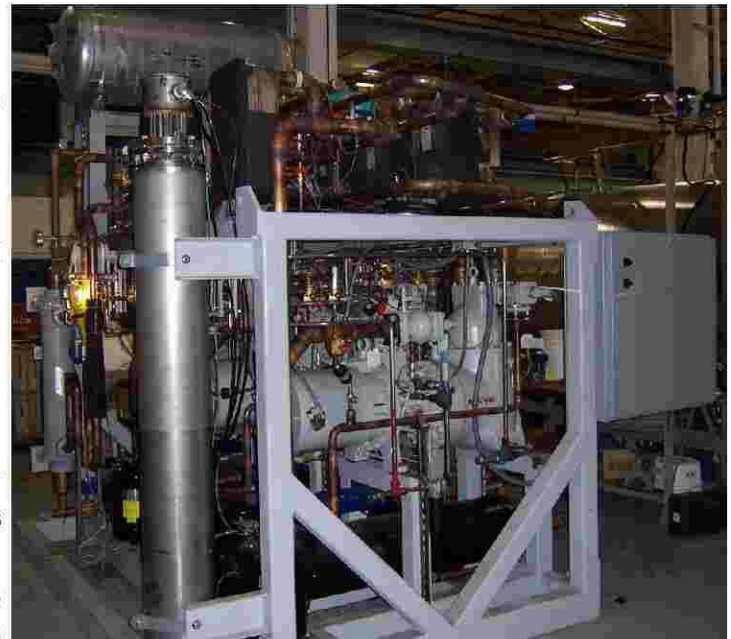
Phone: 215-598-1230
Fax: 215-598-1232
Email: marketing@dumack.com

www.dumack.com

Teva Pharmaceuticals, Irvine, CA

As part of an ongoing relationship with SP Industries Inc., Dumack Engineering Inc. was contracted to analyze new mechanical equipment and design support structures at the Teva Pharmaceuticals Plant in Irvine, California. SP Industries designs equipment to be used in the preservation and storage of vaccines and other pharmaceutical products which are administered intravenously. This process is accomplished through the use of large chambers, condensers, vacuum pumps, compressors and various additional equipment.

As a requirement of the state of California, all of the proposed equipment for the Teva Pharmaceutical site had to be designed to withstand seismic loading per the International Building Code guidelines. The equipment itself, along with all structural frames and skids, not only needed to be designed to these standards, but also anchored to prevent any movement during such an event. The equipment was anchored to various building



components including concrete slabs, mezzanine structure, and metal stud walls. Some equipment was supported off of structural frames and skids.

Due to the available space in these facilities and the required arrangement of the equipment, special consideration was also given to the placement of the structural components. Dumack Engineering understands the concept of mechanical design leading and controlling the project. The configuration of the mechanical equipment is critical to the process. Therefore, inventive, yet practical,

solutions were developed which also incorporated the concern of constructability in providing the structural stability required.

The Teva Pharmaceuticals project is just the latest in a long line of projects for SP Industries Inc. Dumack Engineering prides itself on these relationships with valued clients. This type of continued consulting service not only maintains a profitable situation for both parties, but also demonstrates the quality and efficiency that keeps clients coming back.